

TRBOnet Enterprise

TIPRO Speakerbox/Handset

Configuration Guide



Last revised on 23 December 2024

USA Office

Neocom Software
150 South Pine Island Rd., Suite 300
Plantation, FL 33324, USA

Sales

EMEA: +44 203 608 0598
Americas: +1 872 222 8726
APAC: +61 28 607 8325

www.trbonet.com
info@trbonet.com

Contents

- 1 Introduction 2
- 2 Connecting Device..... 2
- 3 Updating Configuration File 2
 - 3.1 ChangeMe Utility 2
- 4 TRBOnet Enterprise Dispatch Console 3
 - 4.1 Configuring Device's Keys..... 3
 - 4.2 Configuring Hot Keys..... 5

1 Introduction

This manual contains information on setting up the TIPRO integrated Speakerbox and Handset (also referred to as the "TIPRO device") using the ChangeMe utility and the TRBOnet Enterprise software.

2 Connecting Device

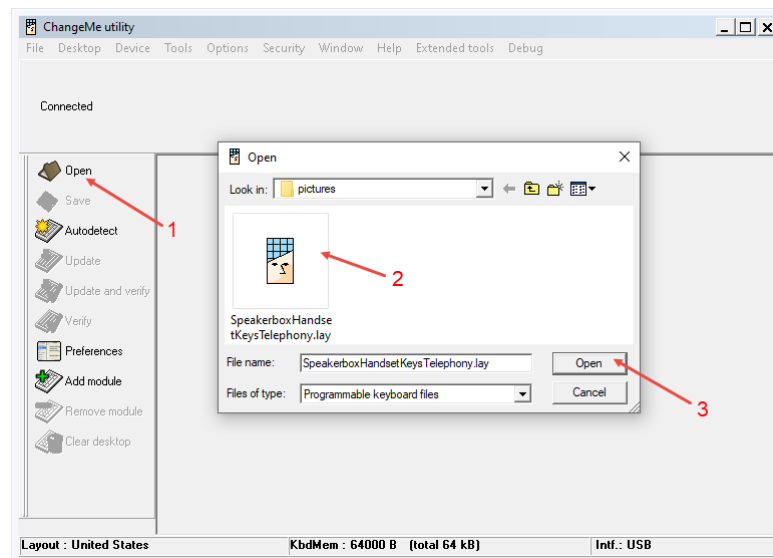
Before starting to configure the device's keys, connect the TIPRO device to your PC via two USB cables, and to the power supply.

3 Updating Configuration File

3.1 ChangeMe Utility

This section describes how to update the TIPRO configuration file using the ChangeMe utility.

- Run the *ChangeMe* utility.
- On the **File** menu, click **Open**,
or
Click **Open** in the left pane (1).



- In the **Open** dialog box that opens, navigate to the *SpeakerboxHandsetKeysTelephony.lay* file (2) and click **Open** (3).

Note: For TIPRO layout files, contact our support team at support@trbonet.com

- Once the file is opened, click **Update** in the left pane.

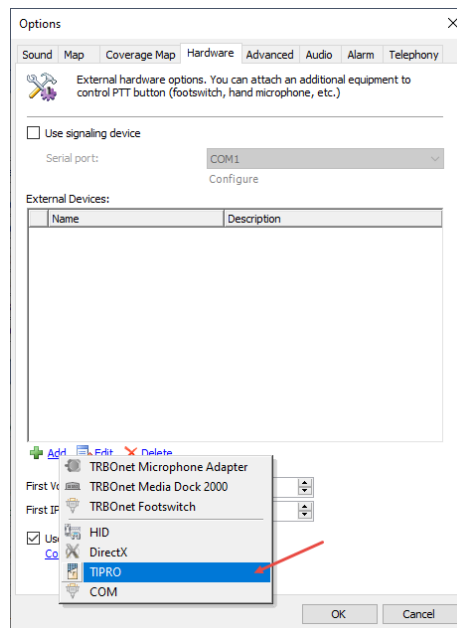
4 TRBOnet Enterprise Dispatch Console

This section describes how to appropriately configure TRBOnet Enterprise Dispatch Console.

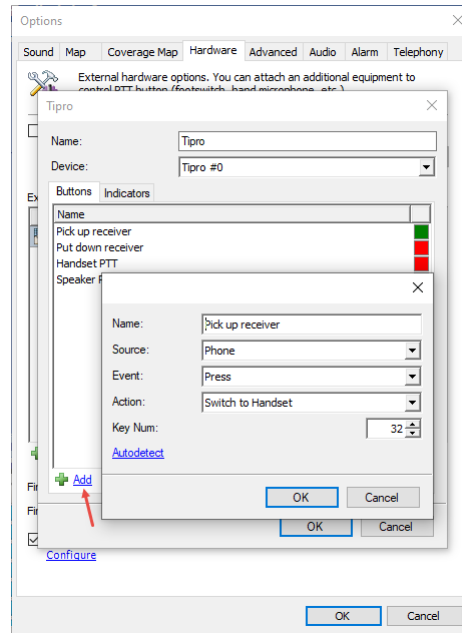
- Run *TRBOnet Enterprise Dispatch Console*.

4.1 Configuring Device's Keys

- On the **Tools** menu, click **Options**.
- In the **Options** dialog box, click the **Hardware** tab.



- In the lower part, click the **Add** link, and in the drop-down menu click **TIPRO**.

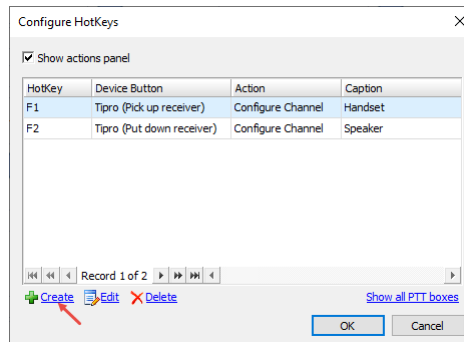


- In the **Tipro** dialog box, click the **Add** link and specify the following two Tipro buttons manually:
 - **Pick up receiver**
 - **Source**
From the list, select **Phone**.
 - **Event**
From the list, select **Press**.
 - **Action**
From the list, select **Switch to Handset**.
 - **Key Num**
Enter **32**.
 - **Put down receiver**
 - **Source**
From the list, select **Phone**.
 - **Event**
From the list, select **Release**.
 - **Action**
From the list, select **Switch to Speakerphone**.
 - **Key Num**
Enter **32**.
 - Other buttons can be added by using the **Autodetect** link, for example Headset PTT (Key num: 47), Speakerphone PTT (Key num: 45), Volume buttons (Key num: 35, 39), Custom buttons (Key num 40, 43), Enable Handsfree (Key num: 44).

4.2 Configuring Hot Keys

This section describes how to configure hot keys for the **Pick up receiver** and **Put down receiver** buttons of the TIPRO device.

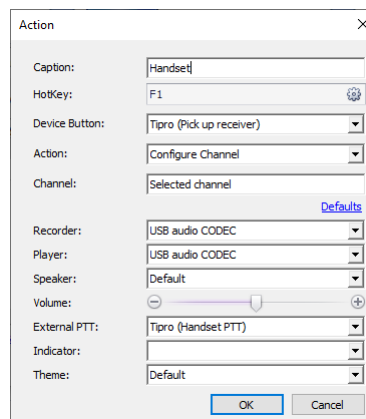
- On the **View** menu, click **Customize Hot Keys**.



In the **Configure HotKeys** dialog box that opens:

- Click the **Create** link.

In the **Action** dialog box that opens, enter the following parameters:
(The screenshot below shows the settings for the **Pick up receiver** button)



- **Caption**
Enter the corresponding name of the action (for example, **Handset** for the **Pick up receiver** button, or **Speaker** for the **Put down receiver** button).
- **HotKey**
Click the gear-wheel button, and on the keyboard, press the key or key combination you want to assign as a hot key for the selected action.
- **Device Button**
From the list, select the corresponding button (**Pick up receiver** or **Put down receiver**).
- **Action**
From the list, select **Configure Channel**.

- **Channel**
From the list, select **Selected Channel**.
- **Recorder**
From the list, select either **USB audio CODEC** for the **Handset** action, or **USB Audio CODEC** for the **Speaker** action.
- **Player**
From the list, select either **USB audio CODEC** for the **Handset** action, or **USB Audio CODEC** for the **Speaker** action.
- **External PTT**
From the list, select either **Handset PTT** for the **Handset** action, or **Speaker PTT** for the **Speaker** action.

The screenshot below shows the settings for the **Put down receiver** button:

